

CHRISTOPHER HODGSON



Whitstable

£350,000 Freehold

FOR COASTAL, COUNTRY
& CITY LIVING



Whitstable

30 Clover Rise, Whitstable, Kent, CT5 3EY

A spacious detached bungalow situated in a sought after location, conveniently positioned within walking distance of shopping facilities at Sainsbury's, and Chestfield Medical Centre and easily accessible to Whitstable town centre, Tankerton slopes and seafront, bus routes and Whitstable mainline station (1.2 miles distant).

The accommodation is arranged to provide an entrance hall, spacious living/dining room with sliding doors

opening to the garden, two double bedrooms, a kitchen and a bathroom.

Outside, the rear garden enjoys a South Westerly aspect and extends to 39ft (11m), incorporating a detached studio/workshop. The property also benefits from a garage and a driveway which provides off street parking for a number of vehicles. No onward chain.



LOCATION

Clover Rise is a popular residential location conveniently situated for access to local amenities including Sainsburys and Tesco supermarkets, Chestfield medical centre and Whitstable and Chestfield mainline railway stations which offers fast and frequent services to London (Victoria approximately 80mins) with high speed services to London (St Pancras approximately 87mins). There are a range of local bus services providing links to surrounding areas. Whitstable is approximately 2 miles distant offering a well regarded range of facilities including shops, educational facilities and leisure amenities.

ACCOMMODATION

The accommodation and approximate measurements (taken at maximum points) are:

GROUND FLOOR

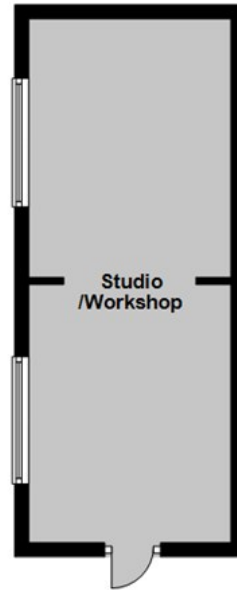
- Entrance Hall
- Living/Dining Room 22'2" x 12'4" (6.76m x 3.76m)
- Kitchen 10'2" x 7'10" (3.11m x 2.40m)
- Bedroom 1 12'4" x 11'1" (3.76m x 3.37m)
- Bedroom 2 11'0" x 9'1" (3.37m x 2.78m)

- Bathroom 7'10" x 6'4" (2.40m x 1.95m)

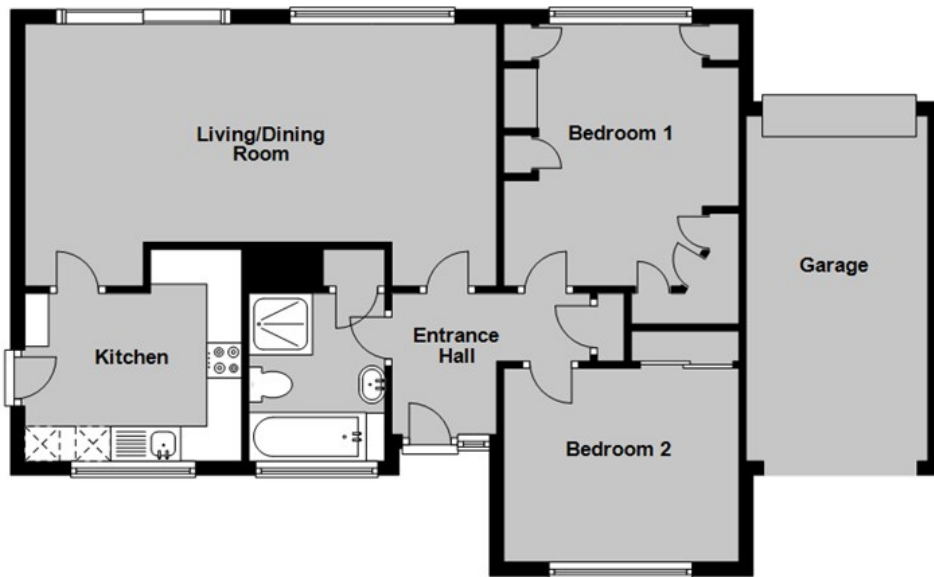
OUTSIDE

- Garden 39' x 36' (11.89m x 10.97m)
- Garage 16'3 x 8'6 (4.95m x 2.59m)
- Studio/ Workshop 24'7" x 9'6" (7.50m x 2.89m)





Ground Floor
 Main area: approx. 68.3 sq. metres (735.0 sq. feet)
 Plus garages, approx. 12.9 sq. metres (138.6 sq. feet)
 Plus outbuildings, approx. 21.7 sq. metres (233.7 sq. feet)



Main area: Approx. 68.3 sq. metres (735.0 sq. feet)
 Plus garages, approx. 12.9 sq. metres (138.6 sq. feet)
 Plus outbuildings, approx. 21.7 sq. metres (233.7 sq. feet)

Council Tax Band D. The amount payable under tax band D for the year 2023/2024 is £2,097.60

Christopher Hodgson Estate Agents for itself and as for the vendor or lessor (as appropriate) gives notice that: 1 These particulars are only a general outline for the guidance of intending purchasers or lessees and do not constitute in whole or in part an offer or a Contract. 2 Reasonable endeavours have been made to ensure that the information given in these particulars is materially correct but any intending purchaser or lessee should satisfy themselves by inspection, searches, enquiries and survey as to the correctness of each statement. 3 All statements in these particulars are made without responsibility on the part of Christopher Hodgson Estate Agents or the vendor or lessor. 4 No statement in these particulars is to be relied upon as a statement or representation of fact. 5 Neither Christopher Hodgson Estate Agents nor anyone in its employment or acting on its behalf has authority to make any representation or warranty in relation to this property. 6 Nothing in these particulars shall be deemed to be a statement that the property is in good repair or condition or otherwise nor that any services or facilities are in good working order. 7 Photographs may show only certain parts and aspects of the property at the time when the photographs were taken and you should rely upon actual inspection. 8 No assumption should be made in respect of parts of the property not shown in photographs. 9 Any areas, measurements or distances are only approximate. 10 Any reference to alterations or use is not intended to be a statement that any necessary planning, building regulation, listed building or any other consent has been obtained. 11 Amounts quoted are exclusive of VAT if applicable. 12 Whilst reasonable endeavours have been made to ensure the accuracy of any floor plan contained in these particulars, all measurements and areas are approximate and no responsibility is taken for any error, omission or mis-statement. This plan is for illustrative purposes only and should be used as such by any prospective purchaser. 13 Any mapping contained within these particulars is for illustrative purposes only and should be used as such by any prospective purchaser. No responsibility is taken for any error, omission or mis-statement. 14 Any computer generated images contained within these particulars are for illustrative purposes only and should be used as such by any prospective purchaser.

Energy Efficiency Rating		Current	Potential
Energy efficiency class	Energy efficiency score		
Band A	92-100		
Band B	81-91		
Band C	69-80	82	
Band D	55-68		
Band E	39-54		
Band F	21-38		
Band G	1-20		

For more information on energy efficiency ratings, visit www.gov.uk/government/organisations/energy-efficiency-rating

England & Wales
 EPC 2023/2024

95-97 TANKERTON ROAD, WHITSTABLE CT5 2AJ | CHRISTOPHERHODGSON.CO.UK

